

Technical Data Sheet



Trade name: XP Graphene
Powder Product No: 001
Version: 2.1

Page 1 of 3

Print date: 01.02.2020
Revision date: 01.02.2020

1. Product Description:

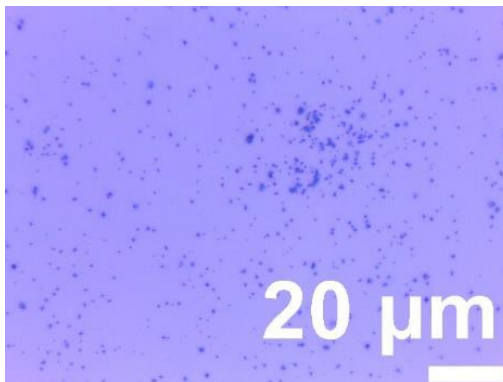
The XP Graphene from 2DM consists of high quality Extra Performance graphene powder. Our graphene is manufactured using a registered “top-down” approach exfoliation method. 2DM's graphene can be used in a wide range of applications such as composites, paintings, batteries, conductive inks or coatings.

2. Technical Aspects

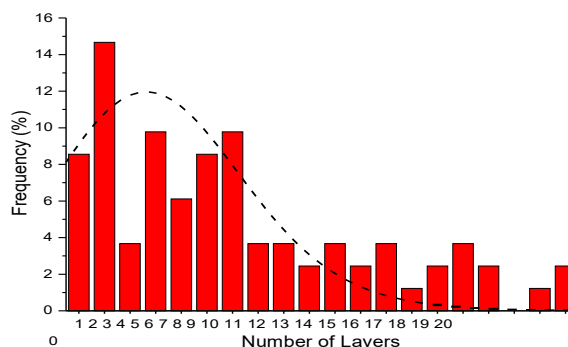
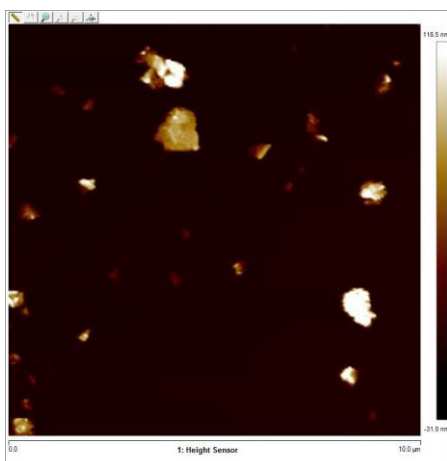
Parameter	
Appearance	Black Powder
Carbon Content	>95%
Average Specific Area	100-140 m ² /g
Average Lateral Size	1-2 μm

3. Characterization

3.1. Optical Microscopy



3.2. Atomic Force Microscopy



Technical Data Sheet

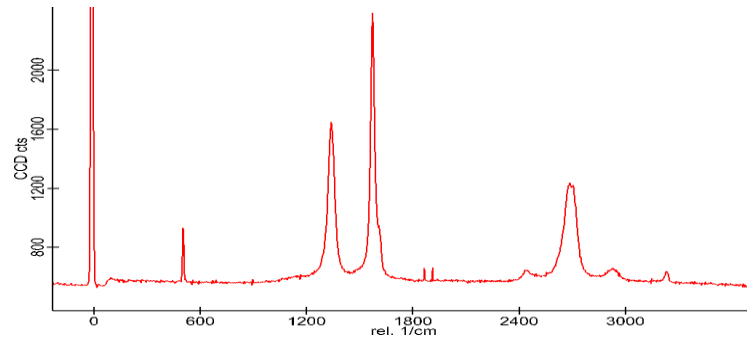


Trade name: XP Graphene
Powder Product No: 001
Version: 2.1

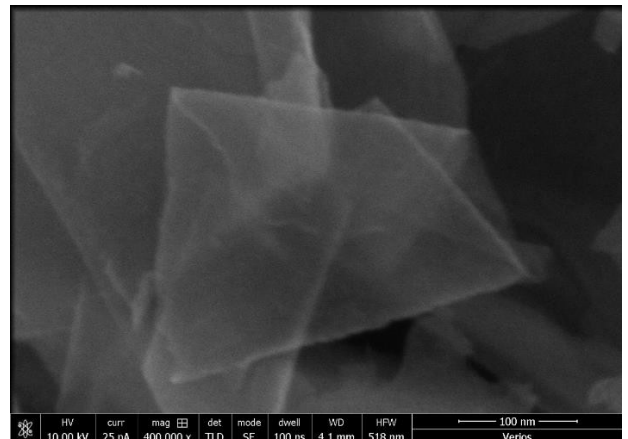
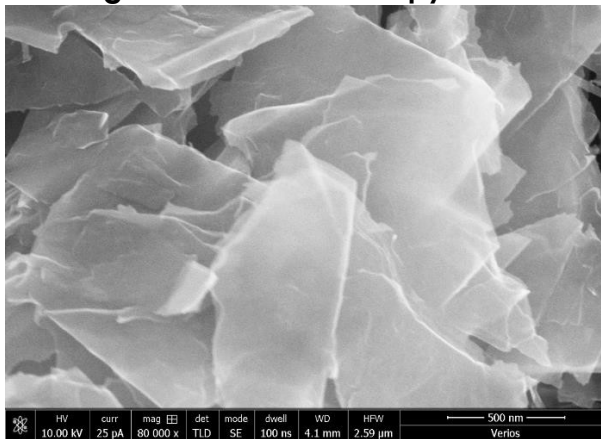
Page 2 of 3

Print date: 01.02.2020
Revision date: 01.02.2020

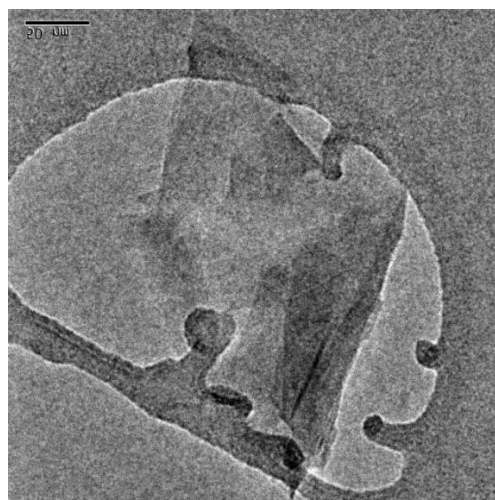
3.3. Raman Spectroscopy



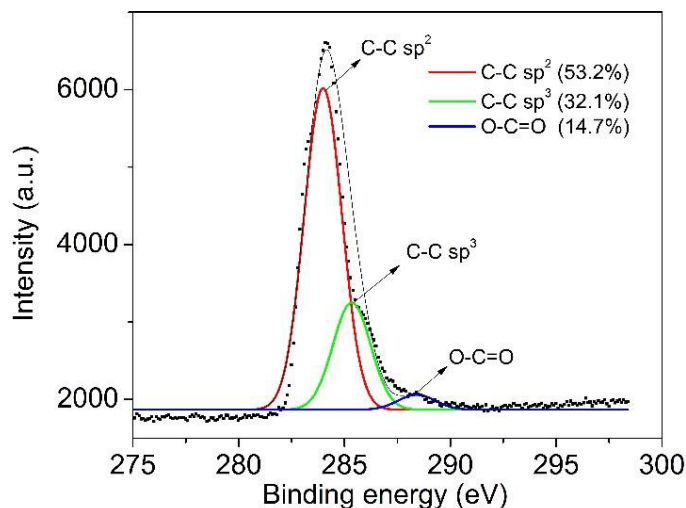
3.4. Scanning Electronic Microscopy



3.5. Transition Electronic Microscopy



3.6. X-Ray Photoelectron Spectroscopy



4. Safety Handling and Storage

- 4.1. Handle carefully in wide ventilated area or equipped with exhaustion and using appropriate PPE: Gloves and dust mask
- 4.2. Storage in dry place protected from light
- 4.3. First Aid Measures:

Inhalation: Remove the victim to fresh air. Closely monitor the victim for signs of respiratory problem, such as difficulty in breathing, coughing wheezing, or pain. In such cases seek immediate medical assistance.

Skin contact: Wash off with soap and plenty of water. Seek medical assistance if irritation persists.

Eye contact: Flush eyes with water as a precaution. Seek medical assistance if irritation persists.

Ingestion: Never give anything by mouth to an unconscious person. Rinse mouth with water.

Self-protection of the first aider: Gloves, NR95 face mask

Most important symptoms and effects, both acute and delayed

To the best of our knowledge, the chemical, physical, and toxicological properties have not been thoroughly investigated.

***For more Safety and Health information please refer to Product Safety Data Sheet**

All test data provided are typical values and not intended to be specification values.

2DM is continually engaging in research, hence it reserves the right to update the information where necessary, without notice.

2DM does not assume any liability arising out of the application or use of the product described herein;

All information contained herein is not a warranty of any kind, is for information only and does not imply warranty of merchantability or fitness for a particular purpose.